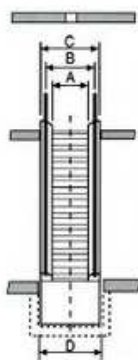
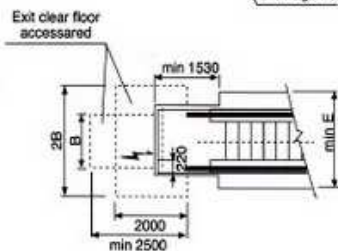
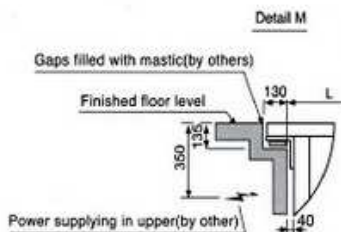
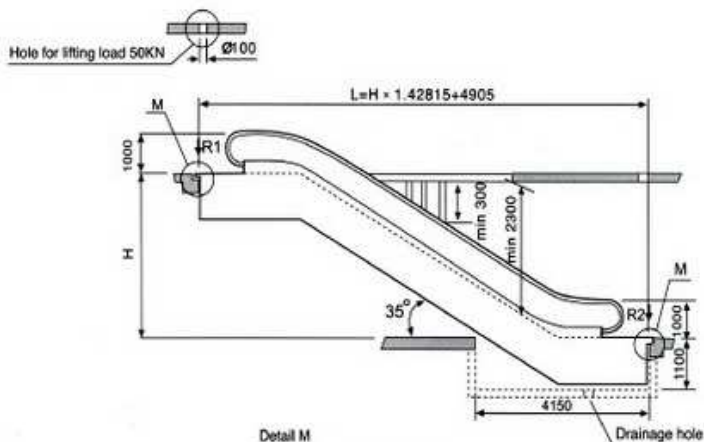


## KYC/S235 Commercial / Slimline Escalator Layout Drawing



Type	A	B	C	D	E	Speed
KYC/S235-600 4500 p/h	600	910	1200	1260	1910	V=0.5m/s
KYC/S235-800 6750 p/h	800	1110	1400	1460	2110	
KYC/S235-1000 9000 p/h	1000	1310	1600	1660	2310	

- All dimensions in (mm).
- When the width of step A=600mm, the truss must be extended by 433mm.
- If add horizontal step, it must add the horizontal length correspondingly.